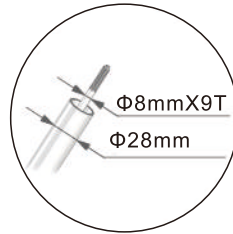
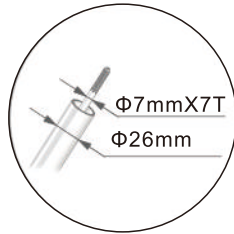
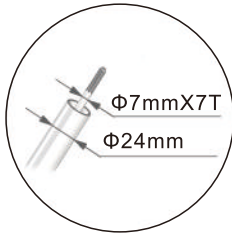


■ 肩掛式操作桿設定 SHOULDER TYPE SHAFT SETTING

A-鋁管 & 傳動軸設定 PIPE & DRIVE SHAFT SETTING



B-齒輪箱 GEAR CASE



24A
Φ24mm
7T*15T
10T*19T



24F
Φ24mm
7T*15T
10T*20T



26B
Φ26mm
7T*14T
10T*18T



26C
Φ26mm
7T*16T
10T*20T



26F
Φ26mm
7T*15T
10T*20T



28A
Φ28mm
9T*16T
10T*20T



28B
Φ28mm
9T*14T
Φ10*17T

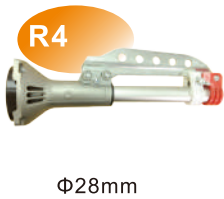


28C
Φ28mm
9T*15T
13T*20T

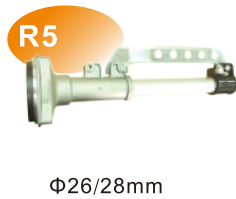


28F
Φ28mm
9T*15T
10T*20T

C-外缸 CLUTCH CASE



R4
Φ28mm



R5
Φ26/28mm



R6
Φ26/28mm



B
Φ26/28mm



C
Φ24/26mm



F
Φ24/26mm

D-加油器 THROTTLE LEVER



Φ18/19
A型
A Type



Φ18/19
B型
B Type



Φ18
D型
D Type



R4型
R4 Type



Φ19
E型
E Type



Φ24/26/28
F型
F Type



Φ26
L型
L Type

E-背帶 HARNESS



單背帶 A
Single Band A



單背帶 B
Single Band B



雙背帶 A
Double Harness A



雙背帶 B
Double Harness B



雙背帶 C
Double Harness C

■ 肩掛式割草機 SHOULDER TYPE BRUSH CUTTER

HF-26L SHOULDER TYPE BRUSH CUTTER



引擎型號	Engine Model	HF-26L
排氣量/功率	Displacement / Power	25.4 c.c. / 0.87kw
化油器形式	Carburetor Type	膜片式 Diaphragm Type
油箱容量	Fuel Tank Cap.	0.87公升 / Liter
握把形式	Handle Type	D Type / U Type

HT-328L/358L SHOULDER TYPE BRUSH CUTTER



引擎型號	Engine Model	HT-328LT	HT-358LT
排氣量/功率	Displacement / Power	30.5 c.c. / 1.7HP	34 c.c. / 1.9HP
化油器形式	Carburetor Type	膜片式 Diaphragm Type	
油箱容量	Fuel Tank Cap.	1公升 / Liter	
握把形式	Handle Type	D Type / U Type	

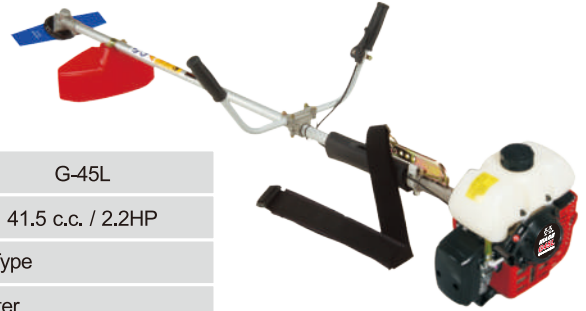
TB-33L/43L/52L SHOULDER TYPE BRUSH CUTTER



引擎型號	Engine Model	TB-33LT	TB-43LT	TB-52LT
排氣量/功率	Displacement / Power	32.6 c.c. / 1.7HP	42.7 c.c. / 2.1HP	51.7 c.c. / 2.3HP
化油器形式	Carburetor Type	膜片式 Diaphragm Type		
油箱容量	Fuel Tank Cap.	1公升 / Liter		
握把形式	Handle Type	D Type / U Type		

■ 肩掛式割草機 SHOULDER TYPE BRUSH CUTTER

G-35L/45L SHOULDER TYPE BRUSH CUTTER



引擎型號	Engine Model	G-35L	G-45L
排氣量/功率	Displacement / Power	32.6 c.c. / 1.7HP	41.5 c.c. / 2.2HP
化油器形式	Carburetor Type	浮筒式 Float Type	
油箱容量	Fuel Tank Cap.	0.8公升 / Liter	
握把形式	Handle Type	U Type	

G-4LS SHOULDER TYPE BRUSH CUTTER



引擎型號	Engine Model	G-4LS
排氣量/功率	Displacement / Power	41.5 c.c. / 2.2HP
化油器形式	Carburetor Type	膜片式 Diaphragm Type
油箱容量	Fuel Tank Cap.	1公升 / Liter
握把形式	Handle Type	D Type / U Type

GX-35/50 SHOULDER TYPE BRUSH CUTTER

POWERED by
HONDA™



引擎型號	Engine Model	GX-35	GX-50
排氣量/功率	Displacement / Power	35.8 c.c. / 1.4HP	47.9 c.c. / 2HP
化油器形式	Carburetor Type	膜片式 Diaphragm Type	
油箱容量	Fuel Tank Cap.	0.63公升 / Liter	
機油容量	Oil Capacity	0.1 公升 / Liter	0.13公升 / Liter
握把形式	Handle Type	D Type / U Type	

■ 肩掛式割草機 SHOULDER TYPE BRUSH CUTTER

NB-411 SHOULDER TYPE BRUSH CUTTER

引擎型號	Engine Model	NB-411
排氣量/功率	Displacement / Power	40.2 c.c. / 2.0HP
化油器形式	Carburetor Type	浮筒式 Float Type
油箱容量	Fuel Tank Cap.	0.8公升 / Liter
握把形式	Handle Type	U Type



EC-04 SHOULDER TYPE BRUSH CUTTER

引擎型號	Engine Model	EC-04
排氣量/功率	Displacement / Power	40.2 c.c. / 2.0HP
化油器形式	Carburetor Type	浮筒式 Float Type / 膜片式 Diaphragm Type
油箱容量	Fuel Tank Cap.	0.88公升 / Liter
握把形式	Handle Type	U Type



HT-200 SHOULDER TYPE BRUSH CUTTER

引擎型號	Engine Model	HT-200
排氣量/功率	Displacement / Power	39.4 c.c. / 2.0HP
化油器形式	Carburetor Type	浮筒式 Float Type
油箱容量	Fuel Tank Cap.	0.7公升 / Liter
握把形式	Handle Type	U Type



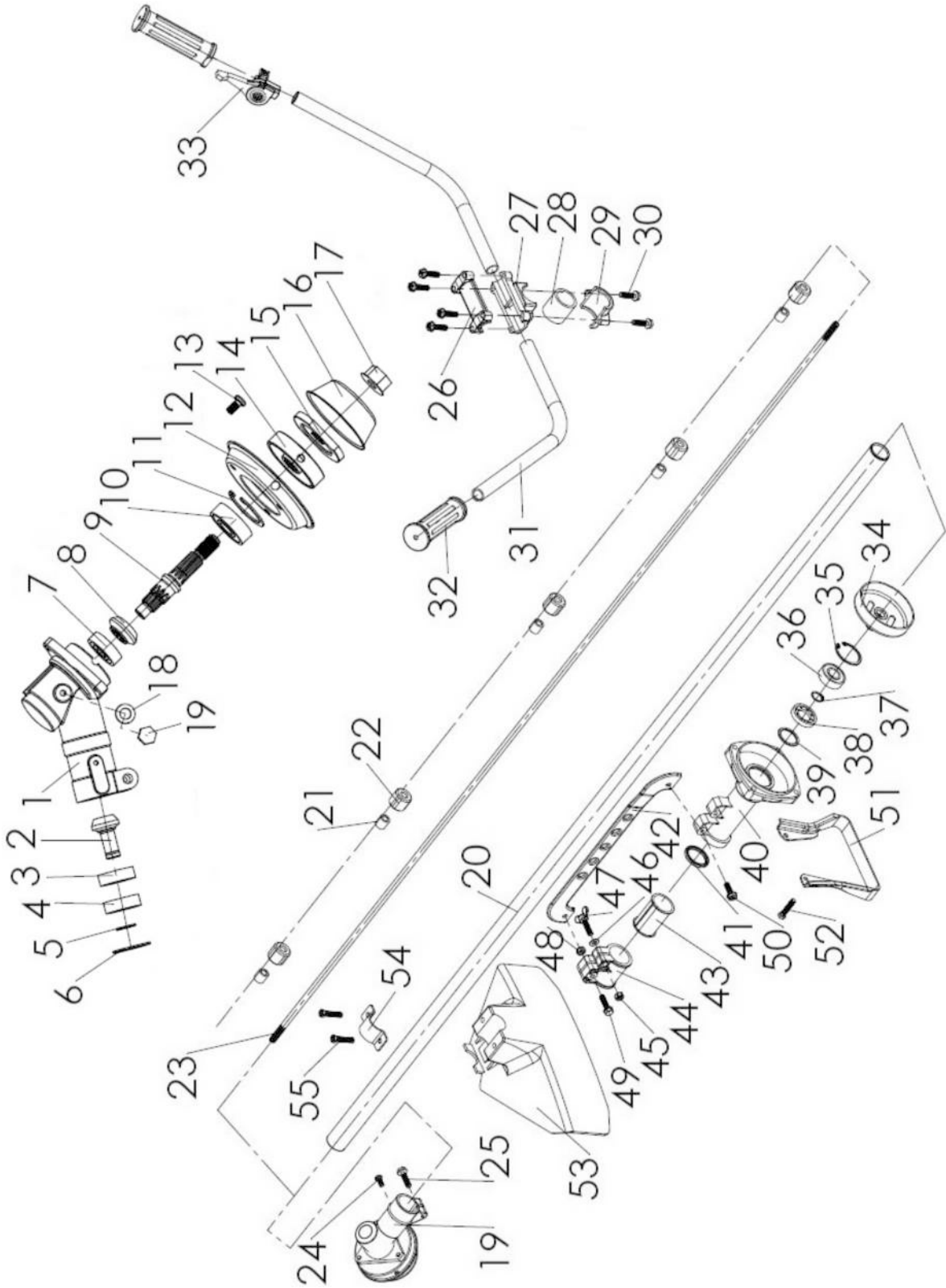
TD-40 SHOULDER TYPE BRUSH CUTTER

引擎型號	Engine Model	TD-40
排氣量/功率	Displacement / Power	40.2 c.c. / 2.1HP
化油器形式	Carburetor Type	浮筒式 Float Type
油箱容量	Fuel Tank Cap.	1公升 / Liter
握把形式	Handle Type	U Type



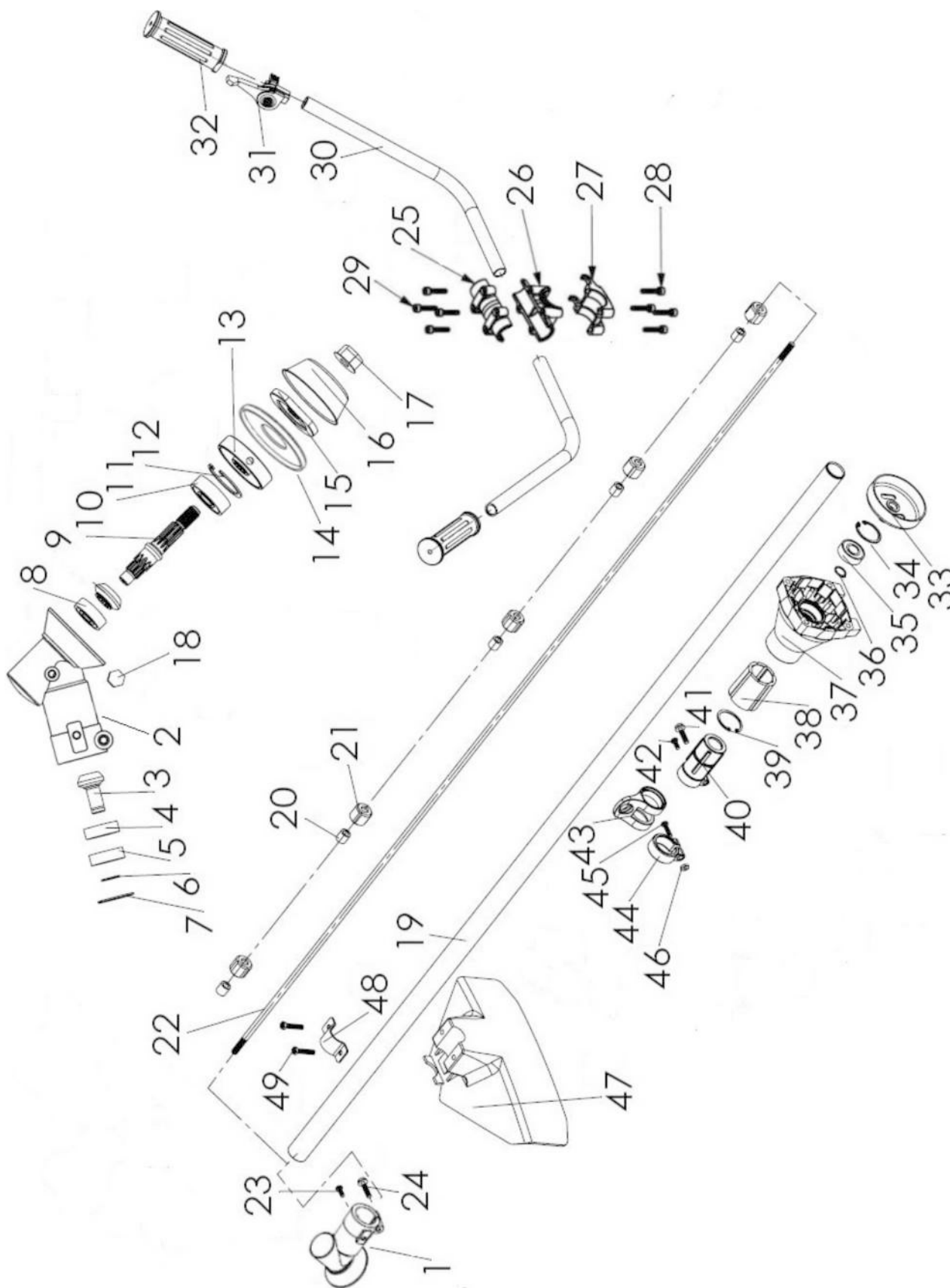
■ 肩掛式操作桿分解圖 PART LIST OF SHOULDER TYPE SHAFT

RBC-5600/5800-C-R4



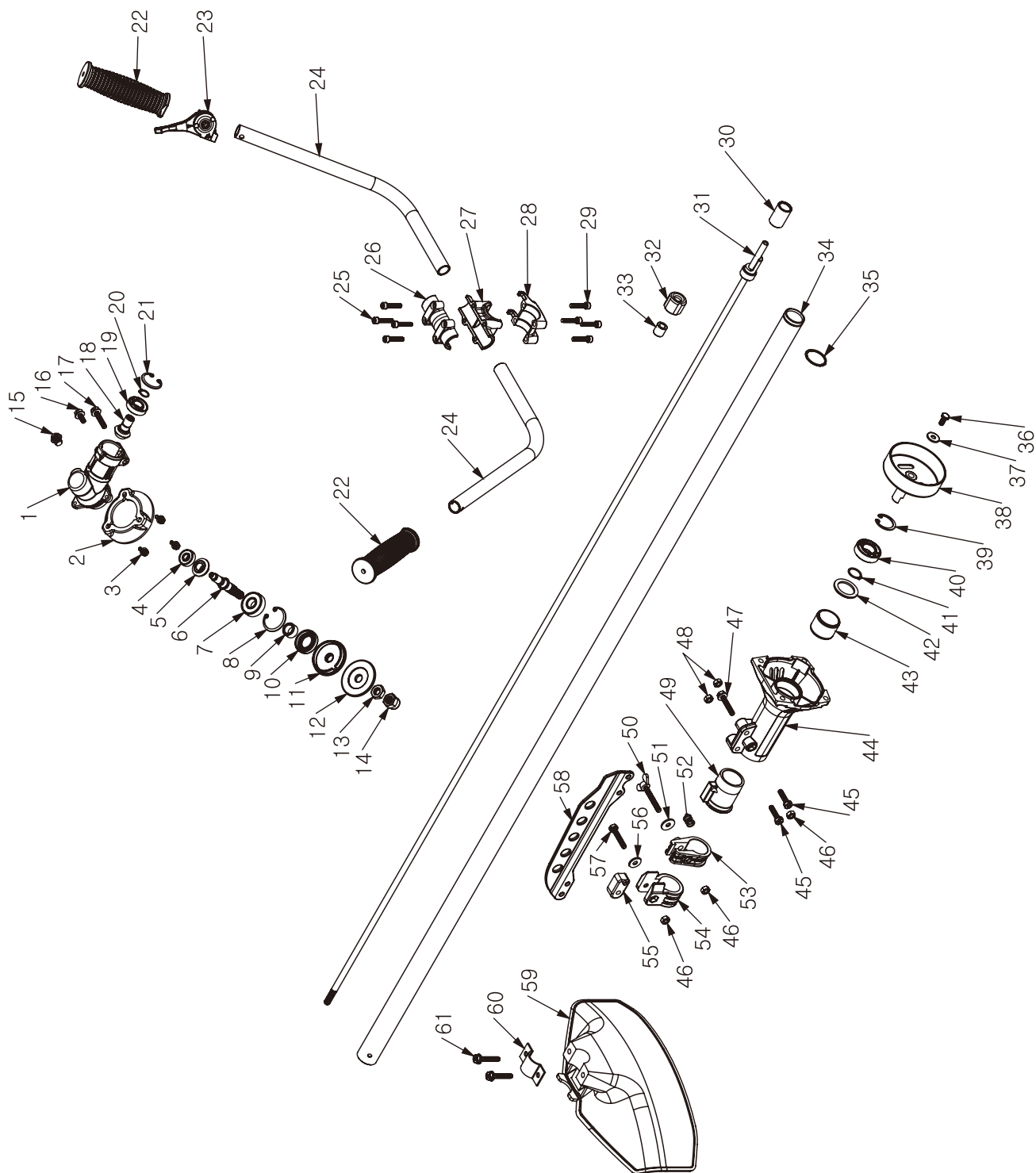
■ 肩掛式操作桿分解圖 PART LIST OF SHOULDER TYPE SHAFT

SBC-5600/5800-C-R4



■ 肩掛式操作桿分解圖 PART LIST OF SHOULDER TYPE SHAFT

RBC-4800-B-R4



■ 肩掛式操作桿分解圖 PART LIST OF SHOULDER TYPE SHAFT

SBC-2400/2600-C-R4

