

穩定的動力輸出，多選擇的操作桿，
正確的修剪工具，最佳的工作效率。

Stable Power Output , Wide Selections of Operating Shaft ,
Correct Cutting Tool , Best Working Efficiency.



割草機
Brush Cutter

■ 割草機 BRUSH CUTTER

您也許需要修剪圍牆邊緣，整理您的花園或清理久未整理長滿雜草的區域，任何艱難的任務您都可以根據技術需求找到正確的HIACE割草機。我們一貫的宗旨就是滿足並超越客戶的需求。我們提供肩掛式割草機，以及背負式割草機搭配九大系列的HIACE引擎以符合您對任何條件包含清除雜草、灌木叢甚至濃密的矮樹叢的需求。我們的肩掛式割草機可以搭配U型操作系統以便長時間的操作控制，也可搭配D型提把以達到您對輕便的要求，而在陡坡及斜坡地形、或是整理溝渠、田埂及矮樹叢，背負式割草機是最理想的修剪工具，我們也提供各種加油把手供您不同的操作需求。

該如何選擇合適的引擎動力來符合您的需求是很多人最大的疑問，割除雜草或是修剪草皮，您只需要搭配25-40c. c. 引擎動力的割草機即可，而更高要求的作業，如在崎嶇不平的地面工作，則需要更有力的40-60c. c. 引擎割草機來完成。

You might need to trim borders, tidy your garden or clear areas overgrown with untended vegetation: for each one of these tasks you can always find just the right HIACE brush cutter with the technical specifications best suited to the job in hand. To satisfy and exceed the requirement of customers is our consistent aim. We offer 9 series of HIACE engines which can be fit with shoulder type shaft, or knapsack frame to be the right brush cutter for your clearing applications ranging from rough grass, thickets, or shrubs to dense undergrowth. Our shoulder type brush cutter can be equipped with a bicycle-style "U"-handle for long time operating. If you need light-weight design, we also offer D handle for you. Knapsack brush cutter is the best trimmer for working on steep or sloping ground and cleaning ditches, banks and undergrowth. We also offer different throttle options for your operating requirement. For many type of trimmers, the most complicated question is how to choose the suitable engine source. For grass cutting and trimming jobs, a brush cutter of between 25 to 40 c.c. displacement will be enough. More demanding tasks on uneven ground should be performed using more powerful brush cutters of between 40 and 60 c.c. displacement.



※引擎可傾斜360度，任何位置都能順利操作。

Engine can be tilted through 360°: runs smoothly in any position.
(HT-328L/358L、TL-33L/43L/52L、TB-33L/43L/52L)

※適用於陡坡及斜坡地形、及整理溝渠、田埂及矮樹叢的背負式割草機。

Ideal knapsack brush cutter for working on steep or sloping ground and cleaning ditches, banks and undergrowth.

※自動潤滑的培林傳動，降低震動以提升操作者舒適度。

Transmission with self-lubricating bearings designed to minimize vibrations for greater operator comfort.

※鋁管搭配鋼製傳動軸心，提供最大功率傳輸和最低震動。

Aluminum pipe and steel drive shaft: combination guaranteeing maximum power transmission and minimal vibration.

※輕量化和結實的傘齒輪傳動設計，操作時輕鬆控制於適當位置。

Lightweight and compact bevel gear drive reduces weight at the gear case, making the machine easier to handle and position.

※刀頭使用左牙螺帽固定，除了可增加強度，也可輕易拆卸或更換刀具。

New bevel drive attached by way of M10 male thread: improved strength and simpler removal / replacement of cutting tool.

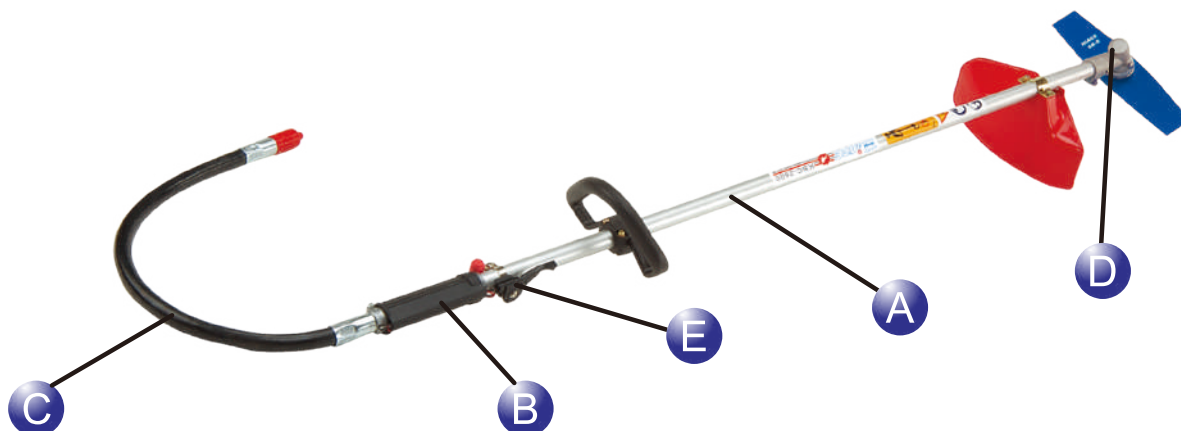
※可調整式抗震系統，再搭配符合人體工學的特點（把手及背帶），可適用於任何高度的操作者。

Adjustable anti-vibration system allows adaptation of ergonomic machine features (handles, harness) to any height and build of operator.

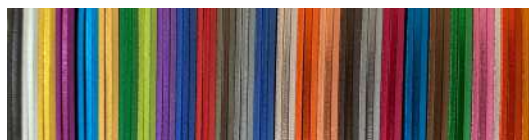
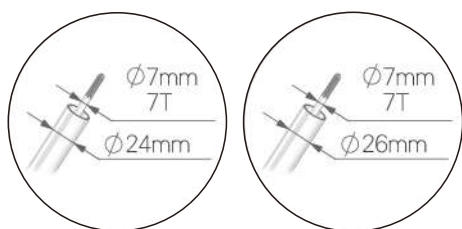
※供應各式修剪工具，可依不同作業面積及植被種類來選擇適合的工具。

Broad choice of cutting tools for different cutting areas and different kinds of vegetation.

■ 背負式操作桿設定 KNAPSACK TYPE SHAFT SETTING



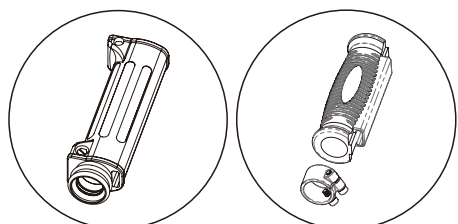
A-鋁管 & 傳動軸設定 PIPE & DRIVE SHAFT SETTING



鋁管顏色處理 PIPE ANODIZED COLOR

B-繼手設定

PIPE HANDLE SETTING



T TYPE

Z TYPE

C-軟管設定

FLEXIBLE SHAFT SETTING



- a T TYPE $\Phi 25.4 \times \Phi 25.4\text{mm}$ 720*745mm
- b T TYPE $\Phi 25.4 \times \Phi 25.4\text{mm}$ 880*905mm
- c Z TYPE $\Phi 25.4 \times \Phi 22.8\text{mm}$ 840*845mm
- d Z TYPE $\Phi 25.4 \times \Phi 20.8\text{mm}$ 840*845mm

E-加油器 THROTTLE LEVER



R6



$\Phi 26$
D型
D Type



$\Phi 26$
J型
J Type



$\Phi 24/26$
F型
F Type

J-S WITH STOP SWITCH 附停止開關
J-E WITHOUT STOP SWITCH 不附停止開關

D-齒輪箱 GEAR CASE

24A



$\Phi 24\text{mm}$
7T*15T
10T*19T

24F



$\Phi 24\text{mm}$
7T*15T
10T*20T

26B



$\Phi 26\text{mm}$
7T*14T
10T*18T

26C



$\Phi 26\text{mm}$
7T*16T
10T*20T

26F



$\Phi 26\text{mm}$
7T*15T
10T*20T

■ 背負式割草機 KNAPSACK BRUSH CUTTER

HT-328/358 KNAPSACK BRUSH CUTTER



引擎型號	Engine Model	HT-328	HT-358
排氣量/功率	Displacement/Power	30.5 c.c. / 1.7HP	34 c.c. / 1.9HP
化油器形式	Carburetor Type	浮筒式 Float Type	
背架款式	Frame Type	A2	
油箱容量	Fuel Tank Cap.	1.3公升 / Liter	

TB-33/43 KNAPSACK BRUSH CUTTER



引擎型號	Engine Model	TB-33	TB-43
排氣量/功率	Displacement/Power	32.6 c.c. / 1.7HP	42.7 c.c. / 2.1HP
化油器形式	Carburetor Type	浮筒式 Float Type	
背架款式	Frame Type	A3	
油箱容量	Fuel Tank Cap.	1.3公升 / Liter	

G-35/45 KNAPSACK BRUSH CUTTER



引擎型號	Engine Model	G-35	G-45
排氣量/功率	Displacement/Power	32.6 c.c. / 1.7HP	41.5 c.c. / 2.2HP
化油器形式	Carburetor Type	浮筒式 Float Type	
背架款式	Frame Type	A3	
油箱容量	Fuel Tank Cap.	1.3公升 / Liter	

■ 背負式割草機 KNAPSACK BRUSH CUTTER

NB-411 KNAPSACK BRUSH CUTTER



引擎型號	Engine Model	NB-411
排氣量/功率	Displacement/Power	40.2 c.c. / 2.0HP
化油器形式	Carburetor Type	浮筒式 Float Type
背架款式	Frame Type	A4
油箱容量	Fuel Tank Cap.	0.8公升 / Liter

EC-04 KNAPSACK BRUSH CUTTER



引擎型號	Engine Model	EC-04
排氣量/功率	Displacement/Power	40.2 c.c. / 2.0HP
化油器形式	Carburetor Type	浮筒式 Float Type
背架款式	Frame Type	A4
油箱容量	Fuel Tank Cap.	0.88公升 / Liter

GX-35/50 KNAPSACK BRUSH CUTTER

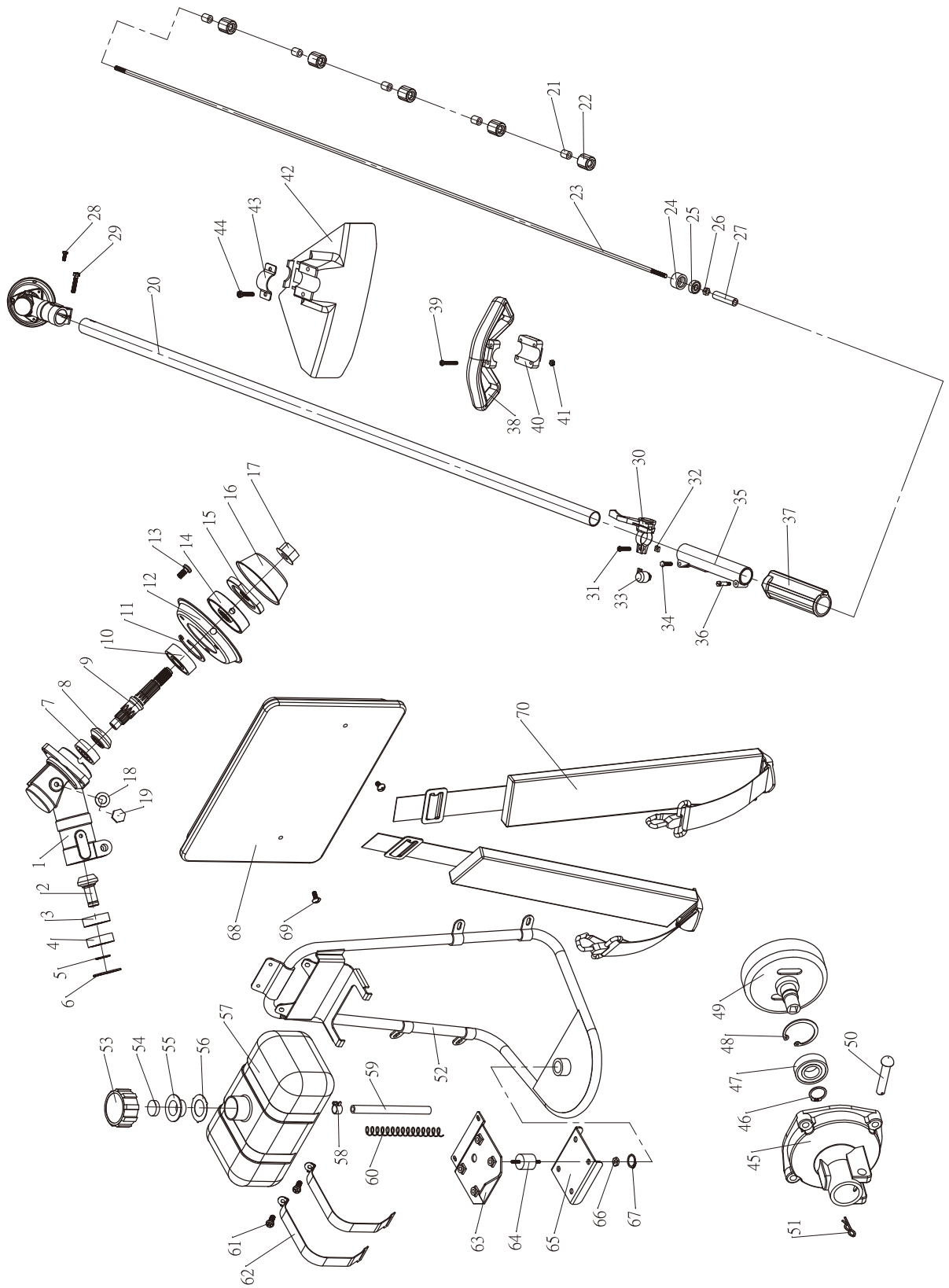


POWERED by
HONDA™

引擎型號	Engine Model	GX-35	GX-50
排氣量/功率	Displacement/Power	35.8 c.c. / 1.4HP	47.9 c.c. / 2HP
化油器形式	Carburetor Type	膜片式 Diaphragm Type	
背架款式	Frame Type	A4	
油箱容量	Fuel Tank Cap.	0.63公升 / Liter	
機油容量	Oil Capacity	0.1 公升 / Liter	0.13公升 / Liter

■ 背負式割草機 KNAPSACK BRUSH CUTTER

A2 Frame-KBC 2600C R6



背負式割草機分解圖 PART LIST OF KNAPSACK BRUSH CUTTER

A3 Frame-KBC 2600C R6

